



Сонатини, вариації

1. Сонатина

Л.Бетховен

Moderato

p

1 2 3 4 5 1 2 3 4 5

1 2 3 4 5 1 2 3 4 5

[illegible]

A musical score for the song "The Rose Tree". The score is written for a piano, with a treble and bass staff. The key signature is one sharp (F#), and the time signature is 2/4. The melody is in the treble staff, and the bass staff provides a simple harmonic accompaniment. The melody consists of a series of eighth and sixteenth notes, with some slurs and fingerings indicated. The bass staff features a simple accompaniment with chords and single notes. The score is divided into three measures, with a repeat sign at the end of the second measure.

A musical score for the song 'The Rose Tree'. The score is written for a piano, with a treble and bass staff. The key signature is one sharp (F#), and the time signature is 4/4. The melody is in the treble staff, and the accompaniment is in the bass staff. The score consists of two systems. The first system has a measure number '1' above the first measure of the treble staff. The second system has a measure number '5' above the first measure of the treble staff. The melody is a simple, catchy tune, and the accompaniment provides a steady, rhythmic foundation.

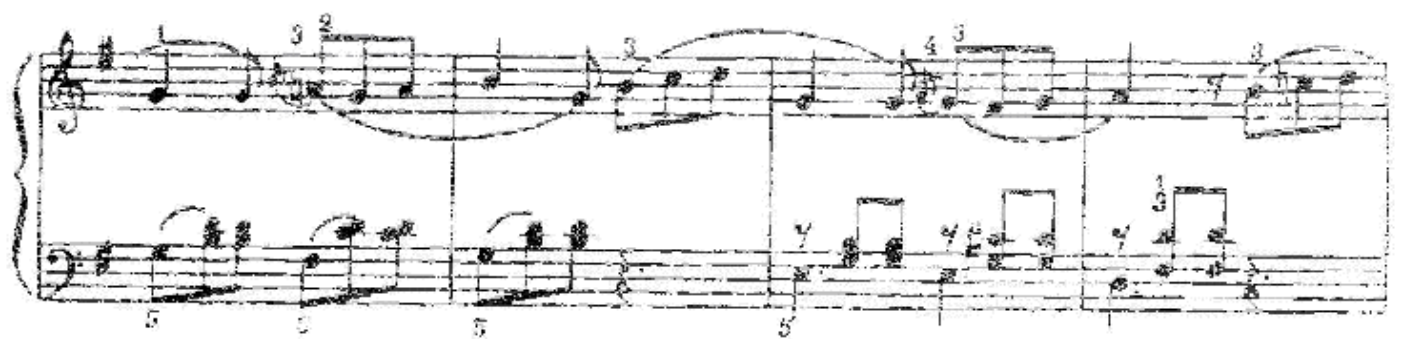
mf

legato

p

Romance

Moderato



Three systems of piano music in D major. The first system begins with a piano (*p*) dynamic. The second system includes a crescendo (*cresc.*) marking. The music features flowing eighth-note patterns in the right hand and sustained chords or simple eighth-note accompaniment in the left hand. Fingering numbers are provided for many notes.

2. Світлячок

Грузинська народна пісня

Варіації

І. Беркович

Moderato

A single system of piano music for the piece "Світлячок". It is marked *Moderato* and begins with a piano (*p*) dynamic. The music consists of eighth-note figures in the right hand and chords in the left hand. Fingering numbers are indicated for the right hand.